

—
BLOQ

creative
carpet tiles

THE BINARY
FLOW



BLOQ

creative
carpet tiles



© Rijksmuseum, Genemuiden



© Het Rijksmuseum, Frans Hals

Nice to know

The colour ochre in the BLOQ logo refers to the rushes and the colour palette of the Golden Age in Holland.

Our story

Being part of Betap, BLOQ can build on more than **100 years of experience** in the flooring sector. Betap grew from a local manufacturer of rush mats in 1918 to an internationally renowned carpet manufacturer.

Working with some of the most reputable architects, designers and commercial carpet partners, Betap's **high-traffic commercial carpet** is used across the world in prestigious office buildings, hotels, universities, museums and various leisure applications. Betap is your partner of choice for commercial carpet.



High-end production line

Group Betap is an **innovative carpet manufacturer** in Genemuiden (The Netherlands) with a vertically integrated production line for tufted and non-woven floor coverings, as well as an own yarn production line.

With BLOQ, we are developing and producing **creative carpet tiles** that comply with the stringent regulations for the commercial market. We offer high-performance tiles focused on office projects, that are sound absorbing and have the best results in fire safety. Our products are also produced following the strictest standards in sustainability.



The Binary

FLOW is part of The Binary collection, a design collection group existing of **five contemporary patterns**, built from a light and dark colour (binary). Living and working environments have never been so close.

Meet The Binary family: FLOW, BALANCE, RENEGADE, SCULPTURE and GRAIN. The Binary collections match perfectly with our The Workplace collection, which uses the same colours.

Flow →



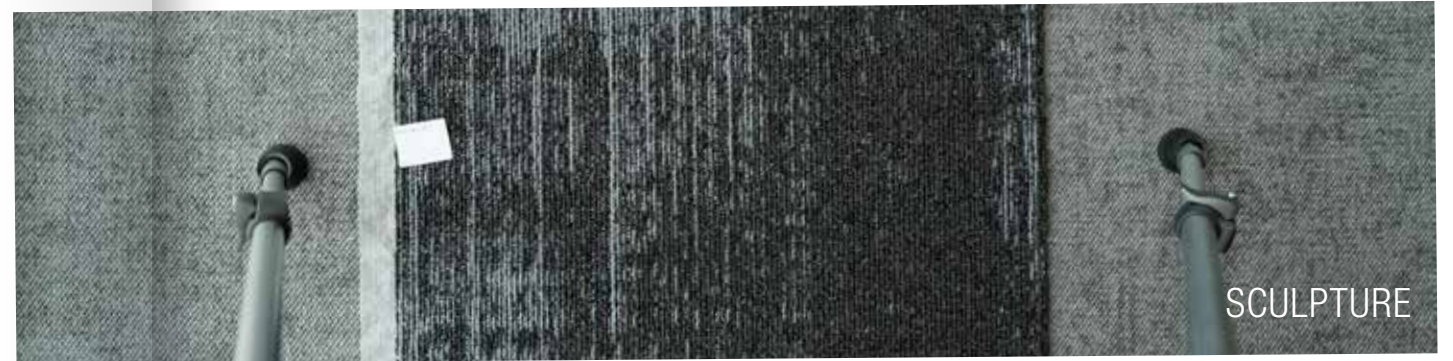
FLOW



BALANCE



RENEGADE



SCULPTURE



GRAIN



*Mixing two yarns:
a light & dark colour*

THE BINARY
FLOW



Inspiration
is everywhere

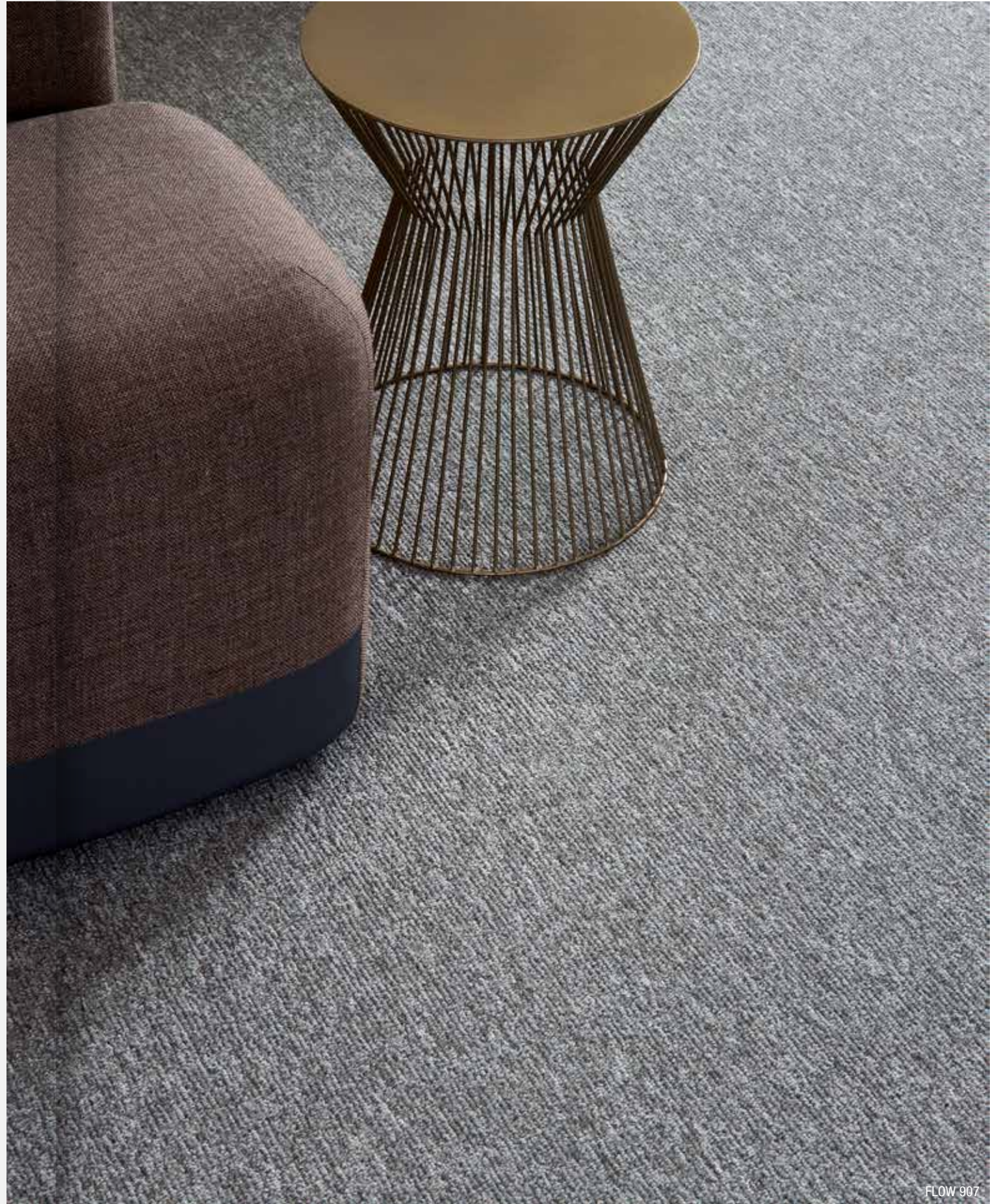
Raindrop pattern



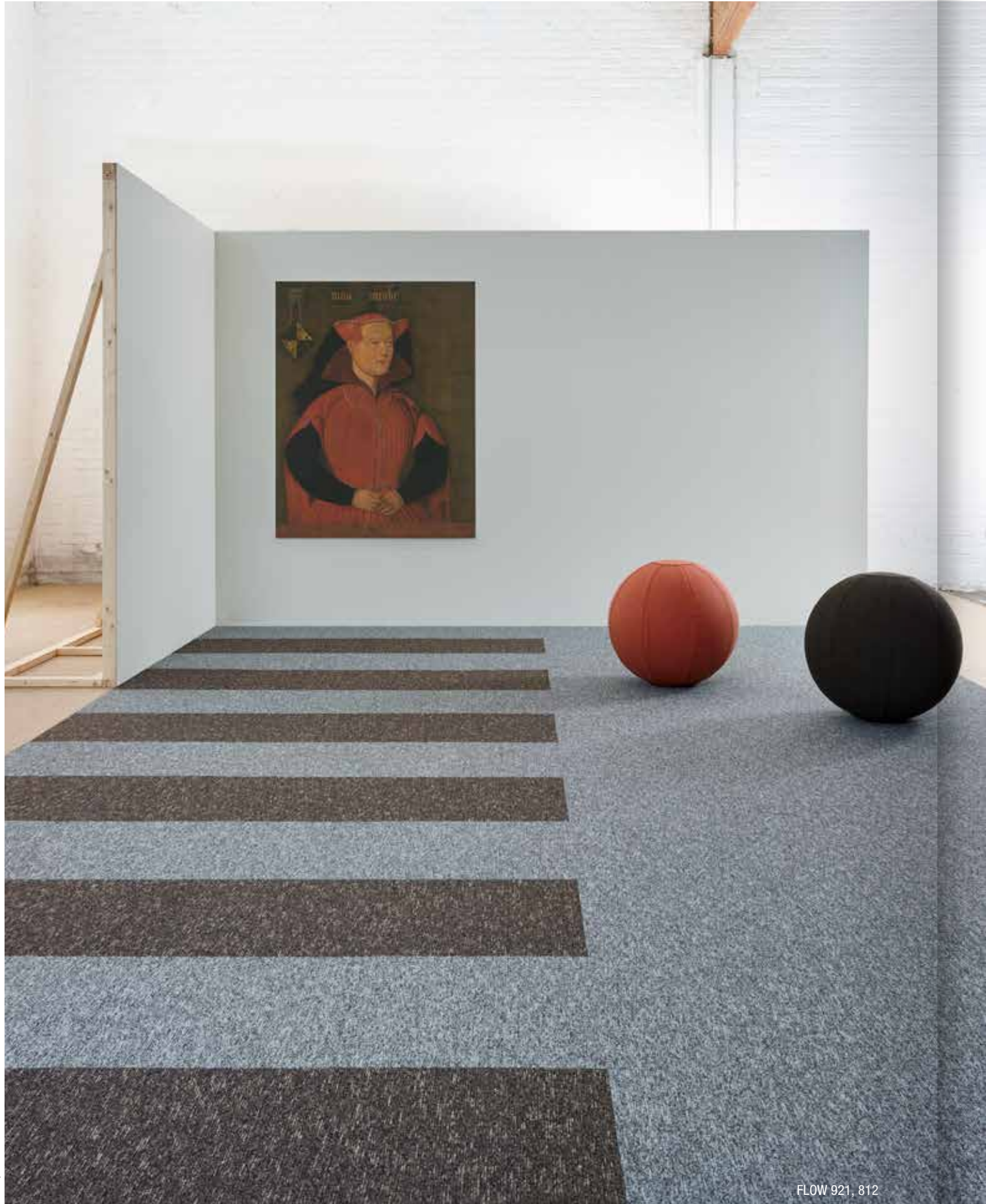
Two shades

FLOW is a tile of 50 x 50 cm. A floor inspired by the soothing sound of rain tapping against the window. **Feel the raindrops** underneath your feet and enjoy the unique pattern in two shades.

Indulge in nature's inspiration.



FLOW 907



FLOW 921, 812



FLOW 921, 812

Colour range

FLOW comes in **18 matching colours**. Use the colours pure and go for one colour tone, or play with colours and mix according to your taste.

Tone on tone or bright and bold? FLOW has it all.



911 MOUSE



907 IRON



111 TRUFFLE



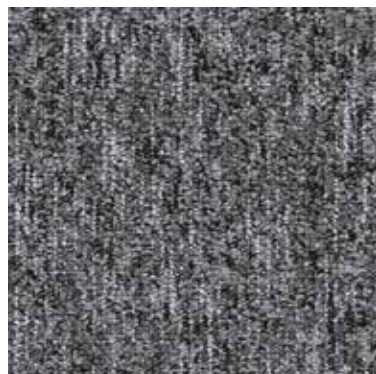
937 ASH



921 ELEPHANT



123 GREIGE



942 SHADOW



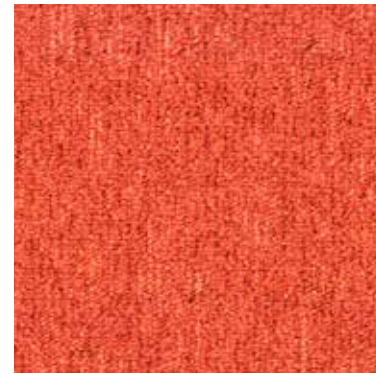
946 GRAPHITE



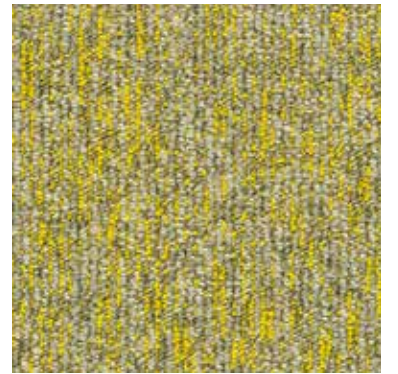
135 NUTMEG



130 SAHARA



218 PAPRIKA



125 FLAX



124 WALNUT



410 FUCHSIA



617 MOSS



812 COFFEE



522 ATLANTIC



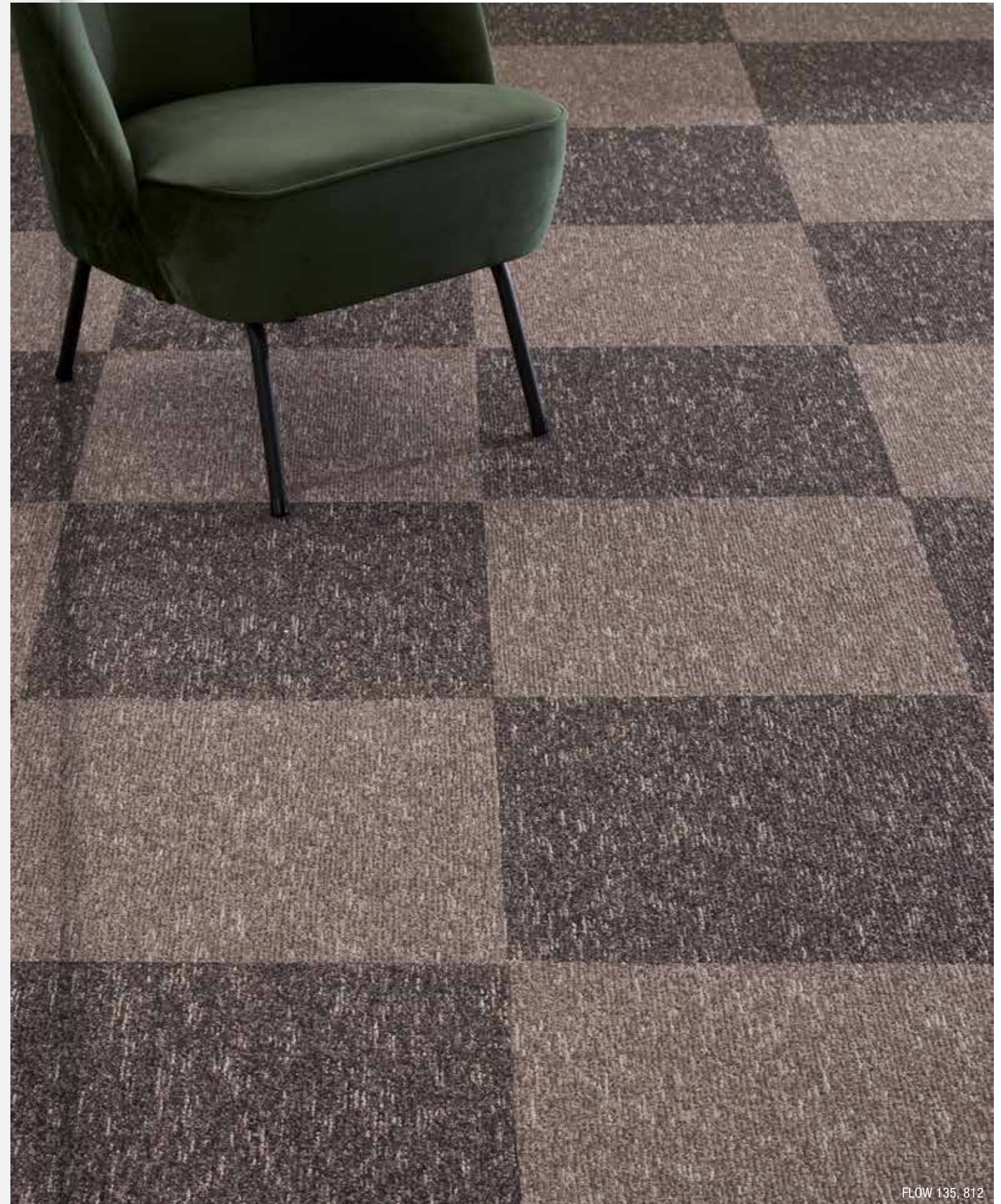
530 SEA



FLOW 921

Pure or checkerboard

Use the colours pure in **one colour tone or dare to mix** with other tones. Soft hues stimulate a homely feeling at work, current colours meet today's trends. A checkerboard pattern can change the atmosphere of an entire room.



FLOW 135_812



FLOW 907, 410

Changing moods



FLOW 907, 410



FLOW 907, 410, 135



FLOW 907, 410, 135, 812



FLOW 907, 410

Highlights

BITBACK

BLOQ uses **Bitback**, Modified Bitumen, which consists of 70% recycled content.

Tiles made with Bitback deliver great acoustic results such as **high sound absorption and insulation**, as well as **noise reduction**. Therefore carpets made with this sustainable backing contribute substantially to personal health and comfort.



AQUAFIL
synthetic fibres and polymers

SOLUTION DYED YARNS

BLOQ uses 100% Polyamide 6 Solution Dyed Nylon from **Aquafil**, the best and leading supplier for carpet manufacturers. Solution dyed means **better colour fastness** and the best results to light and water.

LIGHT REFLECTANCE VALUES

Light Reflectance Value (LRV) is a scale that measures visible and usable light reflected from an illuminated surface. The percentage identifies how much light a colour reflects or absorbs. 0% reflects no visible light, 100% reflects all light.

COLOUR	LRV _{av}	L
111	28.66	60.48
123	13.87	44.05
124	16.75	47.95
125	15.01	45.65
130	24.87	56.95
135	13.58	43.62
218	9.09	36.16
410	5.08	26.97
522	4.27	24.56

COLOUR	LRV _{av}	L
530	6.78	31.31
617	6.19	29.90
812	6.93	31.64
907	22.05	54.08
911	19.69	51.49
921	16.61	47.46
937	9.75	37.39
942	6.71	31.15
946	3.83	23.11



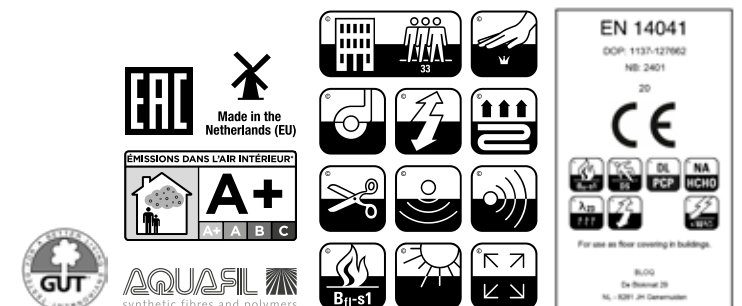
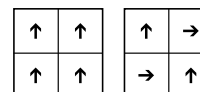
THE BINARY FLOW

SPECIFICATIONS

TYPE OF MANUFACTURE ISO 2424	Tufted Patterned Loop Pile 1/10"
PILE FIBER COMPOSITION ISO 2424	100% Polyamide 6 Solution Dyed Nylon made by Aquafil
SECONDARY BACKING ISO 2424	Bitback, Modified Bitumen 70% Recycled Content
DIMENSION EN ISO 24342	50 x 50 cm
PILE WEIGHT ISO 8543	650 g/m ²
SURFACE PILE WEIGHT ISO 8543	380 g/m ²
TOTAL WEIGHT ISO 8543	4 400 g/m ²
TOTAL THICKNESS ISO 1765	6.9 mm
PILE HEIGHT ISO 1766	3.8 mm
PILE DENSITY ISO 8543	0.100 g/m ³
NUMBER OF TUFTS ISO 1763	152 000 /m ²
DIMENSIONAL STABILITY ISO 2551	≤ 0.2%
NUMBER OF COLOURS	18
PACKAGING	Box: 20 tiles / 5 m ² Pallet: 200 m ²

PERFORMANCE

CLASSIFICATION	33 EN 1307
LUXURY RATING	LC1 EN 1307
CASTOR CHAIR RATING	A: Intensive use EN 985
FIRE CLASSIFICATION	B _{fl} -s1 EN 13501-1
IMPACT SOUND INSULATION	ΔL _w : 26 dB EN ISO 10140-3
SOUND ABSORPTION	Frequency Hz 125 250 500 1000 2000 4000 EN ISO 354 α _s 0.01 0.03 0.08 0.22 0.32 0.39
NOISE REDUCTION	α _w : 0.20 EN ISO 354
PERMANENT ANTISTATIC	≤ 2 kV ISO 6356
TRANSVERSAL RESISTANCE	≤ 1 X 10 ⁹ Ohm ISO 10965
THERMAL RESISTANCE	0.080 m ² /K/W ISO 8302
COLOUR FASTNESS TO LIGHT	≥ 7 EN ISO 105-B02
COLOUR FASTNESS TO WATER	≥ 4 EN ISO 105-E01
RUBBING FASTNESS	≥ 4 EN ISO 105-X12
GUT N° PRODIS	63C72CE9



All rights reserved to alter technical specifications.



Part of **betap**[®]

www.bloq.nl